

11	UV lamp	<input type="checkbox"/> 10 Bay-2pcs <input type="checkbox"/> 20 Bay-4pcs <input type="checkbox"/> 30 Bay-6pcs <input type="checkbox"/> 40 Bay-8pcs
12	Ground Wire	1PC
13	Manual	1PC
14	Handle	<input type="checkbox"/> 20 Bay-4pcs <input type="checkbox"/> 30 Bay-1pcs <input type="checkbox"/> 40 Bay-1pcs
15	AC power cord	1PC (0.824 *3 M)
16	Carton Package Dimension	<input type="checkbox"/> 10 Bay <input type="checkbox"/> 20 Bay <input type="checkbox"/> 30 Bay <input type="checkbox"/> 40 Bay
17	Net weight	<input type="checkbox"/> 10 Bay-80.25LBS <input type="checkbox"/> 20 Bay-123.77LBS <input type="checkbox"/> 30 Bay-164.95LBS <input type="checkbox"/> 40 Bay-200.03LBS
18	Gross weight	<input type="checkbox"/> 10 Bay-95.68LBS <input type="checkbox"/> 20 Bay-145.81LBS <input type="checkbox"/> 30 Bay-193.6LBS <input type="checkbox"/> 40 Bay-236.4LBS

The above product parameters and configuration for reference only, to prevail in kind. Subject to change without notice.



(920) 435-5353
contactus@cccp.com
www.cccp.com



Charging Cabinet

User manual

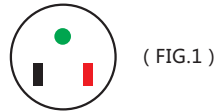
Model: Clean & Charge AC Cabinet



Note before use

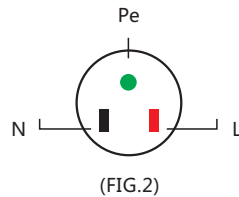
Please carefully read the following before using and installing this product. You need to strictly check the whole cabinet and each compartment to ensure everything is intact. Use the following steps to ensure proper power connection.

1. Please make sure of socket type (FIG.1)



2. Please make sure the socket can be earthed.

If you cannot ensure this situation, please check with an AVO meter. When socket has a ground connection, there must be no voltage between PE and N, and PE and L must have L110V (FIG.2)



3. Please do not use in the following environment. Please place in a suitable space and apply brake to the two front wheels. This will secure the cabinet from moving forward/back.



Slope



High temperature



Damp



Avoid sun and rain

4. Please do not place near any window, as you need to avoid sun and rain. This will maximize the product safety and lifetime.

Maintenance instructions

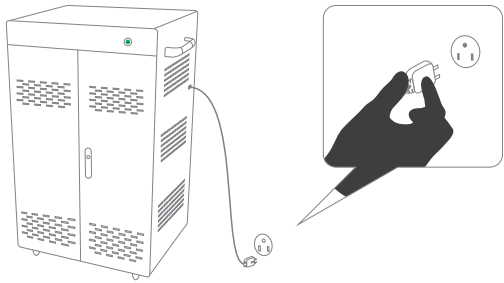
For first-time use or if product has not been used for a long time, please follow these steps:

- When moving the cabinet, please release the brake from the two front wheels (using hand pull-up brake); avoid damaging the wheels.
- When cleaning, do not pour water, alcohol, or cleaner into the cabinet; avoid wetting the power board, as it will affect use and safety.
- If you want to discontinue use for a long period of time, please pull the power plug from the socket and put package in a transparent bag, which will protect its working life.
- When doing repairs, do not work on the unit with it plugged in. An expert must repair the cabinet, and the power cable must be unplugged.

Due to the continuous improvement of our structures appearance, the products you purchase may differ from the appearance structure without prior notice.

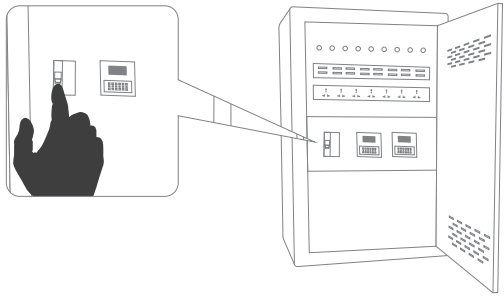
Operating instructions

- Please remove the AC power cable from the small box, connect the power connection port first. Then insert the plug into the socket.
- Please open the side door with the triangle key; turn on the blue switch on RCCB.
- Please connect charging cable with tablet charging port and the cabinet's USB port. Doing this, it will charge when you power the unit on.
- When you turn on the green button, the UV lamp will automatically turn on within 5 minutes to do a disinfection cycle. After those 5 minutes, the cabinet will auto charge within 10 hours.



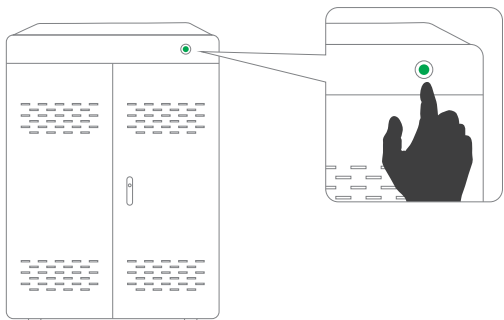
1

Take out AC power cord , connecting with power socket.



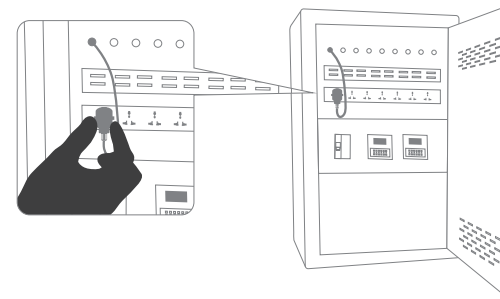
2

Open back door with triangle key , turn on RCCB then close the door.



3

Please turn on green button.



4

Please open the back door, then connect laptops charging interface and plug on the outlets.

Charging Cabinet Technical Parameters and Configuration

No.	Items	Content
1	Product name	10/20/30/40Bay Clean & Charge AC Cabinet
2	Capacity	<input type="checkbox"/> 10 Bay <input type="checkbox"/> 20 Bay <input type="checkbox"/> 30 Bay <input type="checkbox"/> 40 Bay
3	Color	Black
4	Dimension	<input type="checkbox"/> 10 Bay <input type="checkbox"/> 20 Bay <input type="checkbox"/> 30 Bay <input type="checkbox"/> 40 Bay
5	Locker	Front door with ordinary lock Back door with triangle lock
6	Combination	Back side power parts (PDU), front side placement area
7	Input voltage	110V
8	Input frequency	50 – 60 HZ According to local electric supply
9	RCCB	1PC Action current 0.03A $t \leq 0.1s$
10	Overheat protection	2PC Cooling fan in power area (10Bay 1pc)